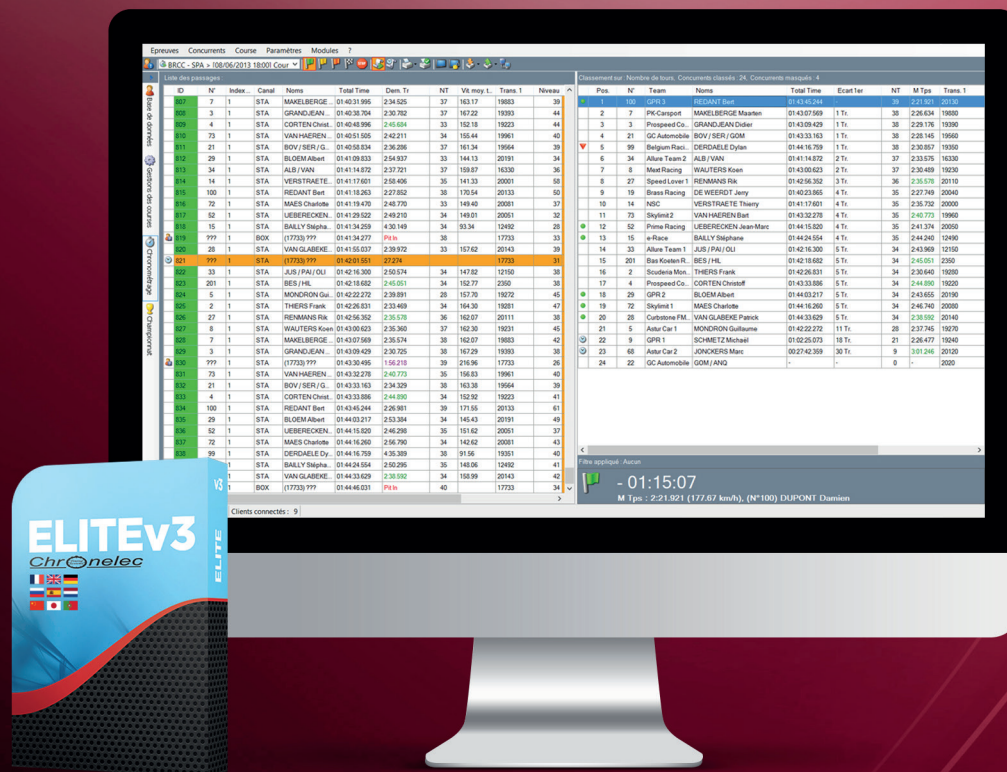




REMOTE DISPLAY MESSAGE

USER MANUAL

**REMOTE DISPLAY MESSAGE SOFTWARE
ALLOWS REAL-TIME DISPLAY OF MESSAGES
OVER TV DISPLAYS.**



23, rue du Comté de Montbéliard 25660 Montfaucon - FRANCE
contact@itschrono.com +33 (0)3 81 57 52 09 www.itschrono.com



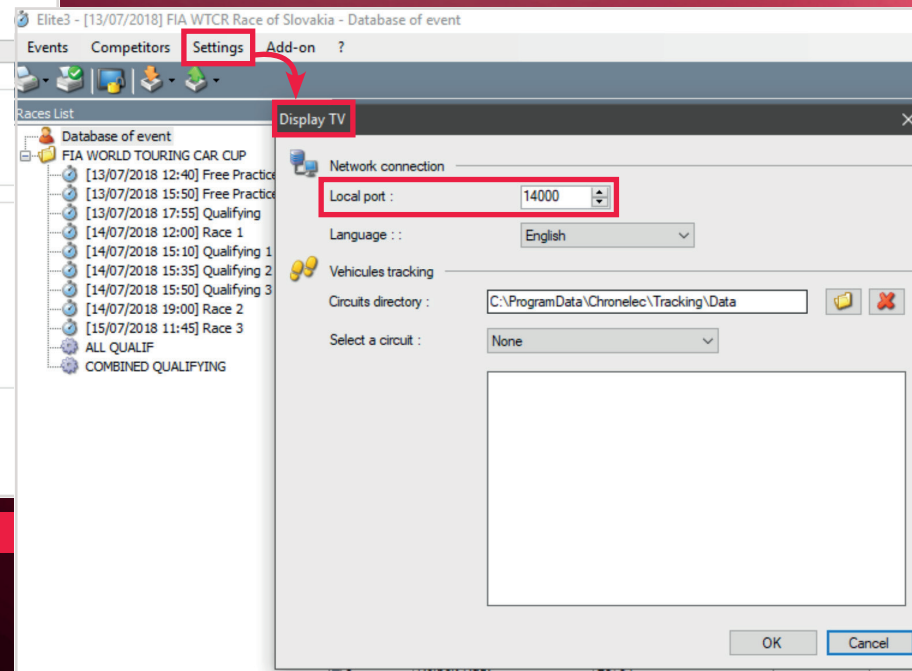
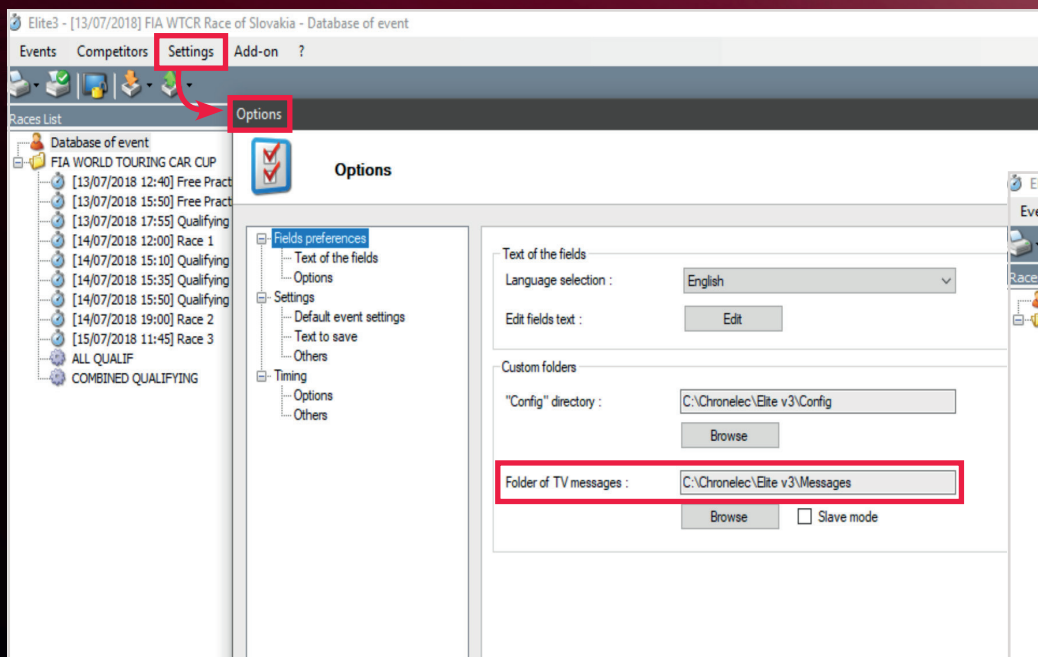
TAG Heuer
PROFESSIONAL TIMING



REMOTE DISPLAY MESSAGE

USER MANUAL

HOW TO USE REMOTE DISPLAY MESSAGE IN ELITE V3 SOFTWARE



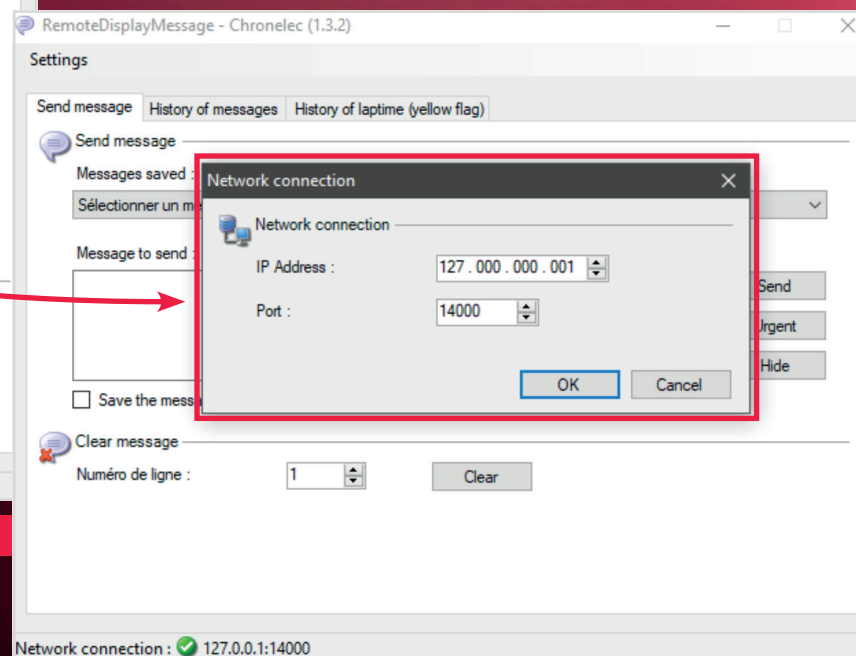
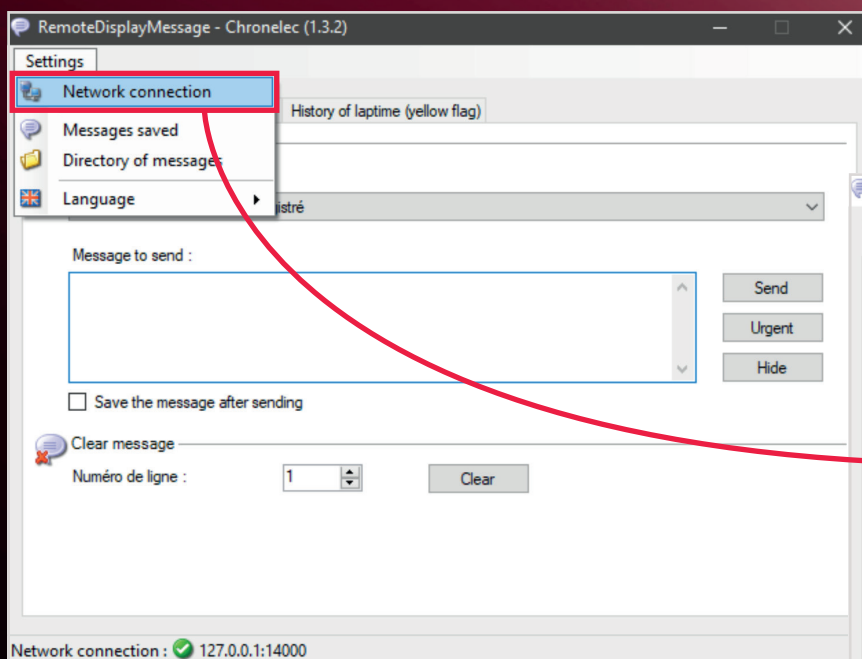


REMOTE DISPLAY MESSAGE

USER MANUAL

HOW TO USE REMOTE DISPLAY MESSAGE IN REMOTE DISPLAY MESSAGE SOFTWARE

If you are using Remote Display Message on the same computer as Elite V3

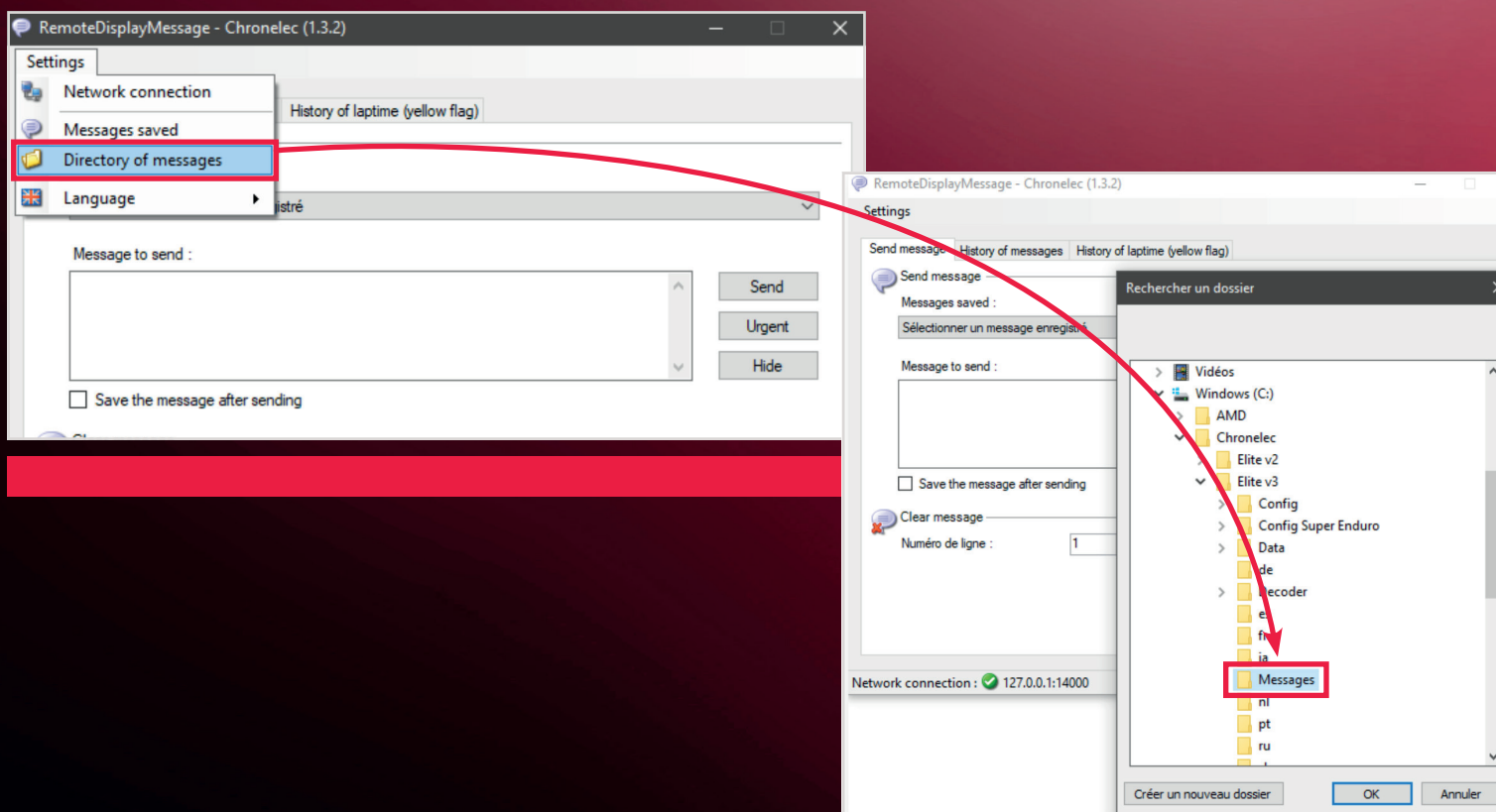




REMOTE DISPLAY MESSAGE

USER MANUAL

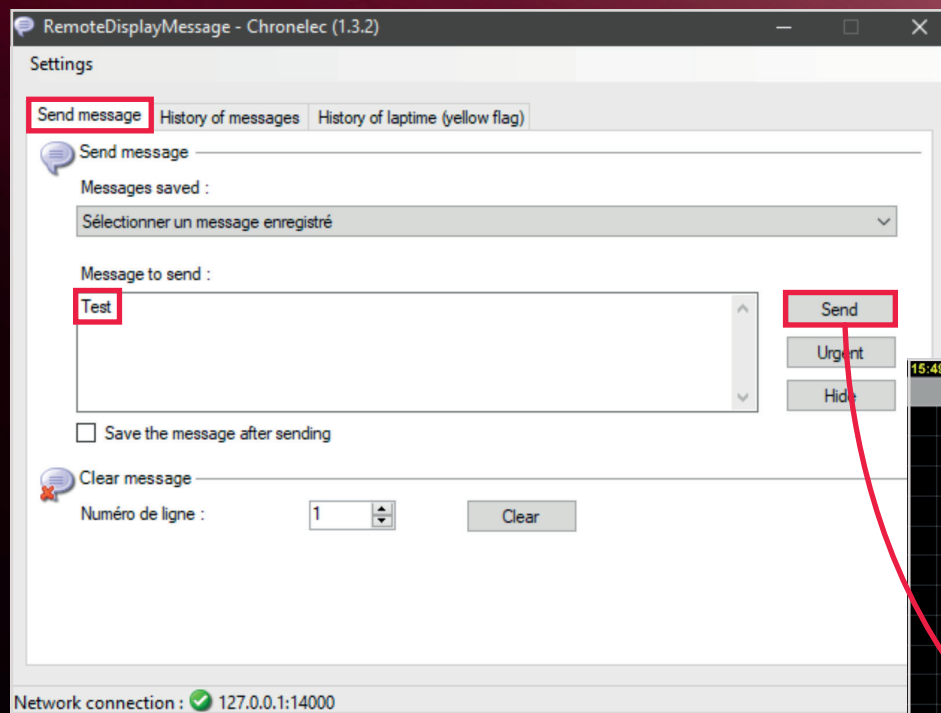
HOW TO USE REMOTE DISPLAY MESSAGE IN REMOTE DISPLAY MESSAGE SOFTWARE





REMOTE DISPLAY MESSAGE

USER MANUAL





REMOTE DISPLAY MESSAGE

USER MANUAL

DO NOT FORGET TO CHECK 'ENABLE MESSAGES' IN THE DISPLAY TV PARAMETERS

The image shows two overlapping software windows. The 'Folder settings' window on the left has a 'Folder settings' button highlighted with a red box. The 'Display TV' window on the right has a tree view with 'Options' highlighted by a red box and a red arrow pointing from the 'Folder settings' window. In the 'Display TV' window, the 'Enable messages' checkbox is checked and highlighted with a red box. At the bottom right of the 'Display TV' window, the 'OK' button is highlighted with a red box.



23, rue du Comté de Montbéliard
25660 Montfaucon - FRANCE

contact@itschrono.com

+33 (0)3 81 57 52 09

www.itschrono.com

MADE IN FRANCE