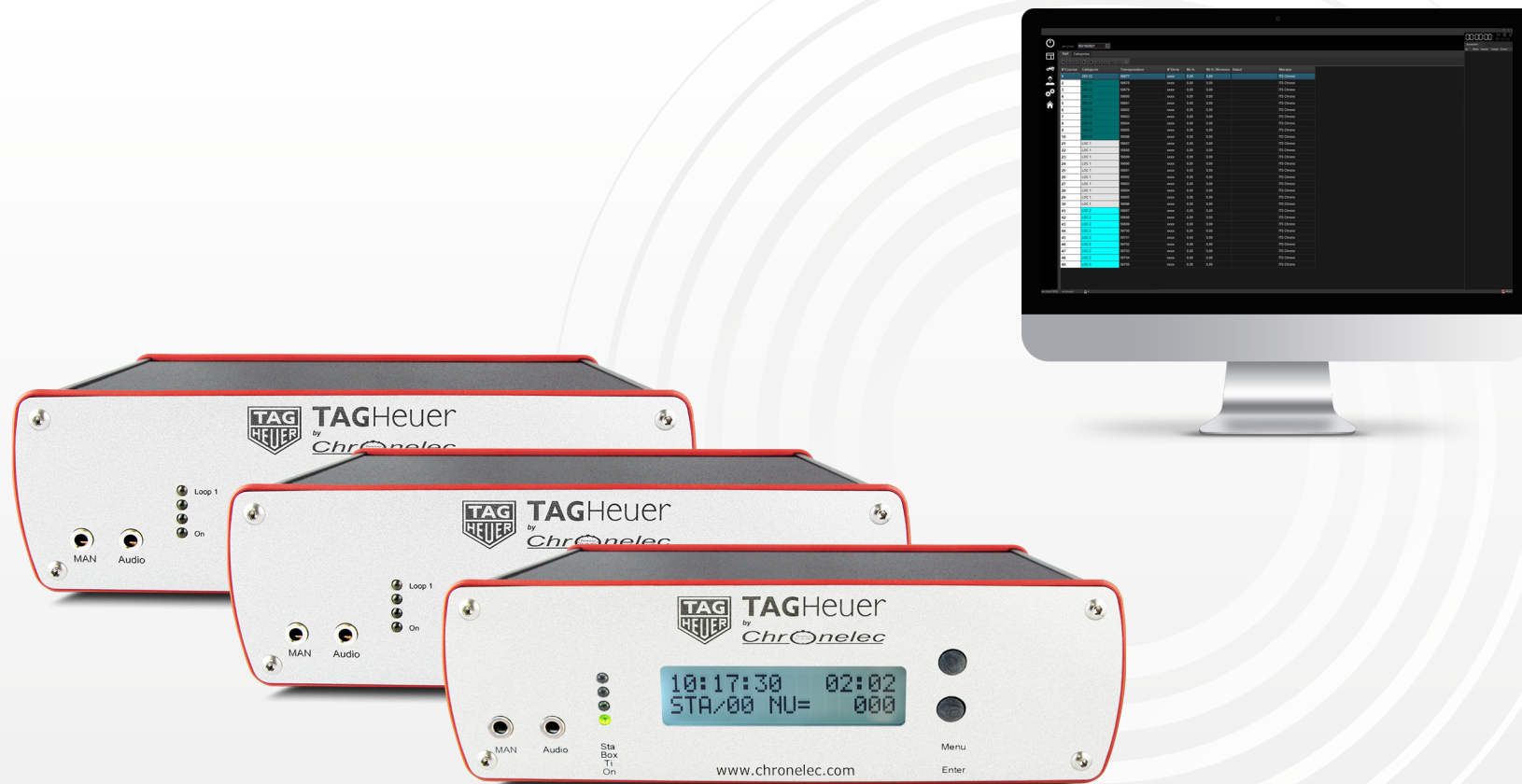




# DECODERS

## HOW TO CONNECT AN INDUCTION DECODER TO A COMPUTER

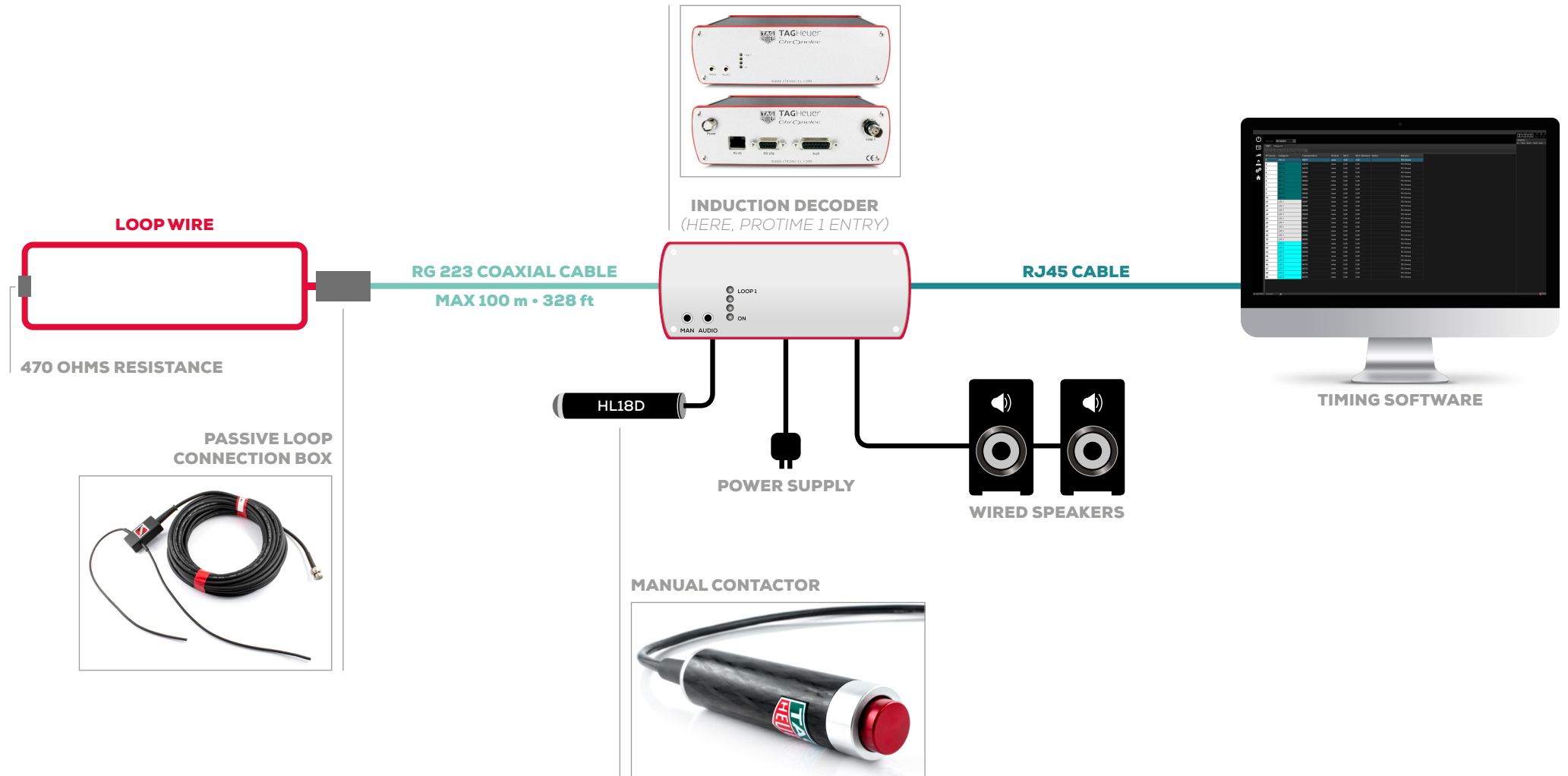




# DECODERS

## HOW TO CONNECT AN INDUCTION DECODER TO A COMPUTER

### INSTALLATION





# DECODERS

## HOW TO CONNECT AN INDUCTION DECODER TO A COMPUTER

### IMPORTANT

TO COMMUNICATE WITH THE DECODER,  
THE CONNECTED COMPUTER MUST HAVE  
A FIXED IP ADDRESS

LIKE ANY DECODERS  
THE DEFAULT IP ADDRESS IS

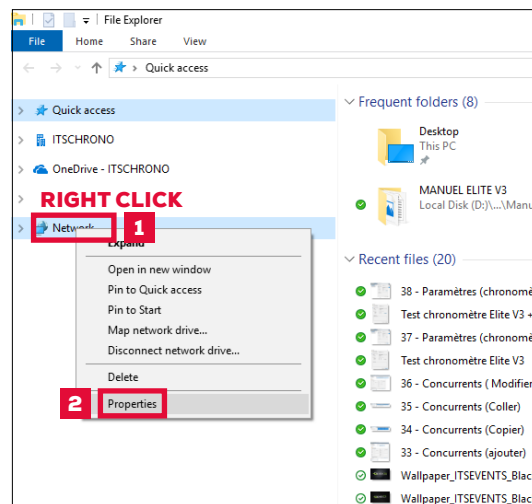
**192.168.000.010**

AND THE DEFAULT  
LOCAL PORT AND REMOTE PORT

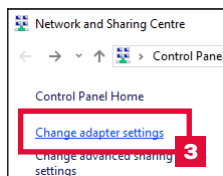
**2008**

### WINDOWS SETTINGS

Go to the Windows Explorer of your computer, right-click on the **NETWORK** folder, then choose the **PROPERTIES** tab.

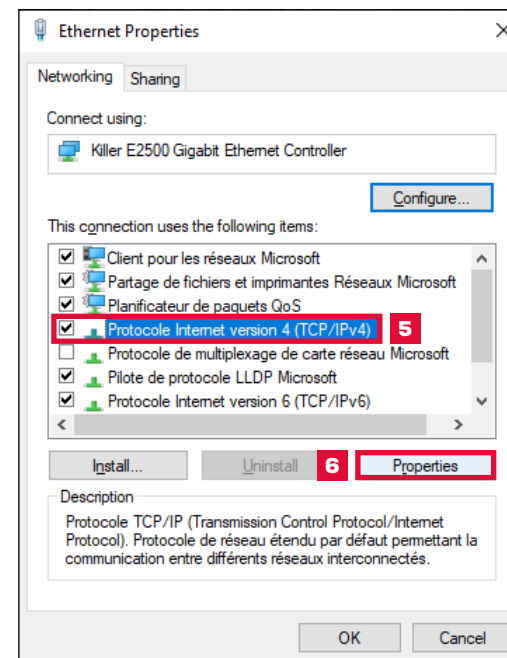


Select **CHANGE ADAPTER SETTINGS** then double-click on **ETHERNET**.



From the open tab Ethernet Properties :

Select **PROTOCOLE INTERNET VERSION 4 (TCP/IPv4)** then **PROPERTIES**.





# DECODERS

## HOW TO CONNECT AN INDUCTION DECODER TO A COMPUTER

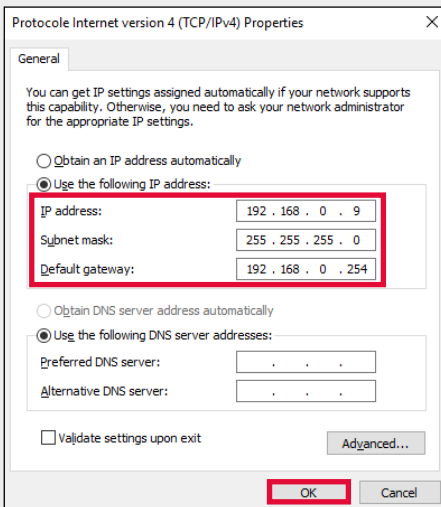
### IMPORTANT

THE IP ADDRESS OF THE COMPUTER MUST BE IDENTICAL TO THAT OF THE DECODER FOR THE FIRST 3 GROUPS OF NUMBERS :  
**192.168.000**

ONLY THE LAST GROUP OF NUMBERS MUST BE DIFFERENT  
(10 FOR THE DECODER AND 9 FOR THE COMPUTER FOR EXAMPLE)

THE SUBNET MASK MUST BE  
**255.255.255.0**

AND THE DEFAULT GATEWAY  
**IS NOT REQUIRED**



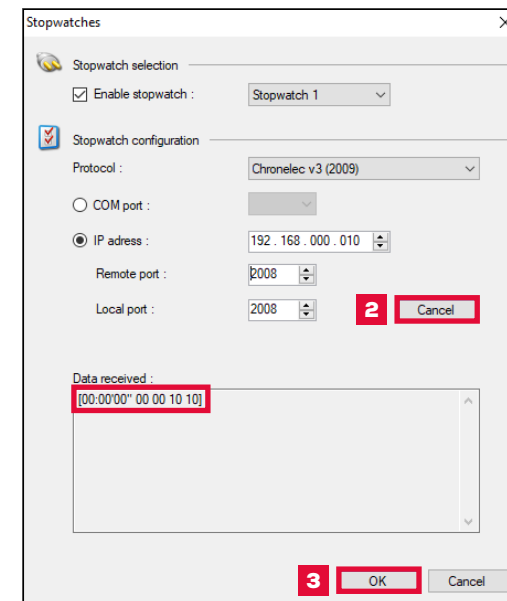
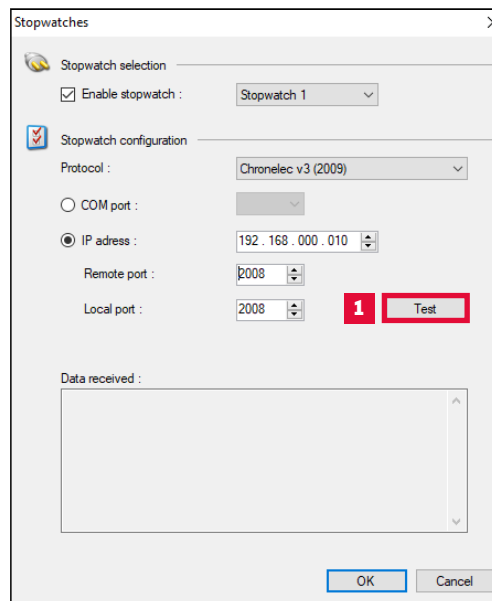
**THE COMPUTER IS NOW READY TO COMMUNICATE WITH THE DECODER**

### CONNECTION TEST COMPUTER / DECODER

Activate a stopwatch in Elite V3 and set it up, then turn on the **TEST** button.  
Then, a frame must go up in the **DATA RECEIVED** block.

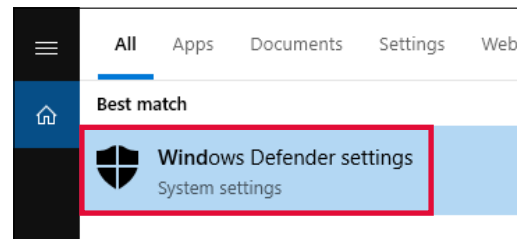
### ONCE THE TEST IS DONE

**DON'T FORGET TO CLICK ON THE CANCEL BUTTON BEFORE CLOSING THIS WINDOW VIA THE OK BUTTON.**



### IF THE CONNECTION DOESN'T WORK

**CHECK YOUR WIRING. DISABLE WINDOWS FIREWALL AND ANTIVIRUS THROUGH THE WINDOWS DEFENDER SETTINGS.**





23, rue du Comté de Montbéliard  
25660 MONTFAUCON - FRANCE

**contact@itschrono.com**

**+33 (0)3 81 57 52 09**

**www.itschrono.com**

**MADE IN FRANCE**