



CHRONOPRINTER 540 GPRS Connection



Required material and software:

- Chronoprinter 540 running on Firmware version D.05 minimum
- HL540-GSM - GSM Docking station running on version C.02 minimum
- GPRS_Settings.exe (available here http://files.tagheuer-timing.net/software/GPRS_Settings.zip)
- GPRS Interface.exe (http://files.tagheuer-timing.net/software/GPRSInterface_v1.3.1.zip)
- Data SIM card (Mobile Broadband provider of your choice)
- Username and password of the GPRS function of your Mobile Broadband provider
- Username and password for the TAG Heuer Professional Timing server* (www.gprstiming.com)
- Computer running at least with Windows Vista, Framework 4 and an internet connection



1. Hardware Settings

Connect your Chronoprinter on an available serial port (COM Port).
Launch the GPRS Setting Software and complete all requested fields :

Serial Port : Available COM Port on your computer

Access Point 1 and 2: You can set 2 different servers / APN connections

Name: APN (Access Point Name) of your SIM Card provider

User ID: User name in order to log in on the Mobile network

Password: of your mobile GPRS access (note that some providers do not request any password)

SIM Balance code: For prepaid SIM cards, you can request the balance directly from the CP540's menu

Connect and turn on your Chronoprinter 540. When all correct information is entered: click on "SAVE NEW SETTINGS". When all CP540 settings are complete, it will print out all information (except server User name and password).

2. Server Settings

Please visit www.gprstiming.com and log in with your personal account.



Note that this login should be exactly the same that you set into GPRS settings.exe

Server 1	
Domain Name / IP :	<input type="text" value="gprstiming.com"/>
Port :	<input type="text" value="13000"/>
UserName :	<input type="text" value="Marcus"/>
Password :	<input type="password" value="*****"/>

If you don't have any server access, feel free to request from us your free personal login

Server Menu:

2.1 Home

Shortcut to go back to the main menu of the Homepage (main menu)

2.2 Add Chrono

There you can register your timer.

In order to add your Timer you'll need the serial number of the Chronoprinter (not the docking station)

The Chrono password will protect your data sent on the server from the unit (we recommend to use another password than your server login).

- Chrono type*
- Serial number*
- Chrono password*
-

You have several options for the timer.

Note that you can even use the Start Clock HL940 .

The "PC" option stands for the Interface software (see chapter 4. GPRS Interface)

Note that for security reasons, a device could only be removed when no timing data is pending on the server. Data is automatically deleted after 1 month.



2.3 Pools

This function enables the communication between all registered devices.

If you set a pool between 2 devices, the server will create a virtual connection between them and open the communication (uni or bi-directional). Note that the same kind of settings should be set on the timer (see chapter 3 Input Mapping)

Add: Means that no pools are set

Remove: A communication is established, click to remove it

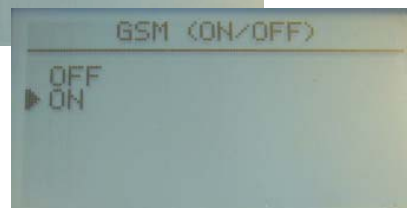
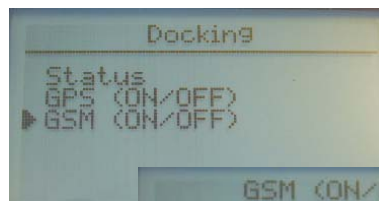
		Receiver			
		Device	PC	CP540	HL940
Sender	Device	SN	9999	0001	0002
	PC	9999			
	CP540	0001			
	HL940	0002			

2.4 Logout

To log out of the web interface

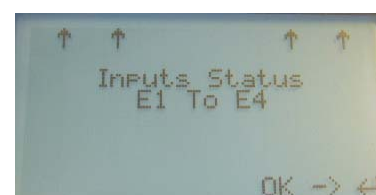
3. GPRS Connection with the Chronoprinter 540

On the Main Screen, you can switch on the GSM module (you can even find this feature in the Main Menu / Docking)



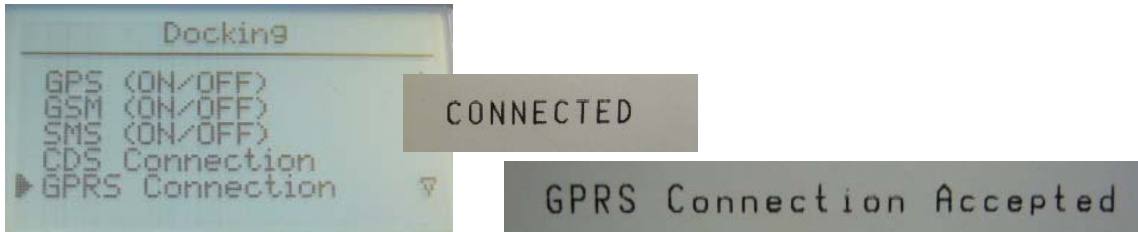
Set the Input Status

Outgoing arrows will send the dataframe on the network. Incoming arrows will collect the dataframe from another timing device depending on the pools you have set.





After the synchro (please refer to CP540 user manual) you can enable the GPRS Connection.



The CP540 will log in onto the server – please wait for the welcome message.

When you see the welcome screen you are now ready to start your timekeeping session.

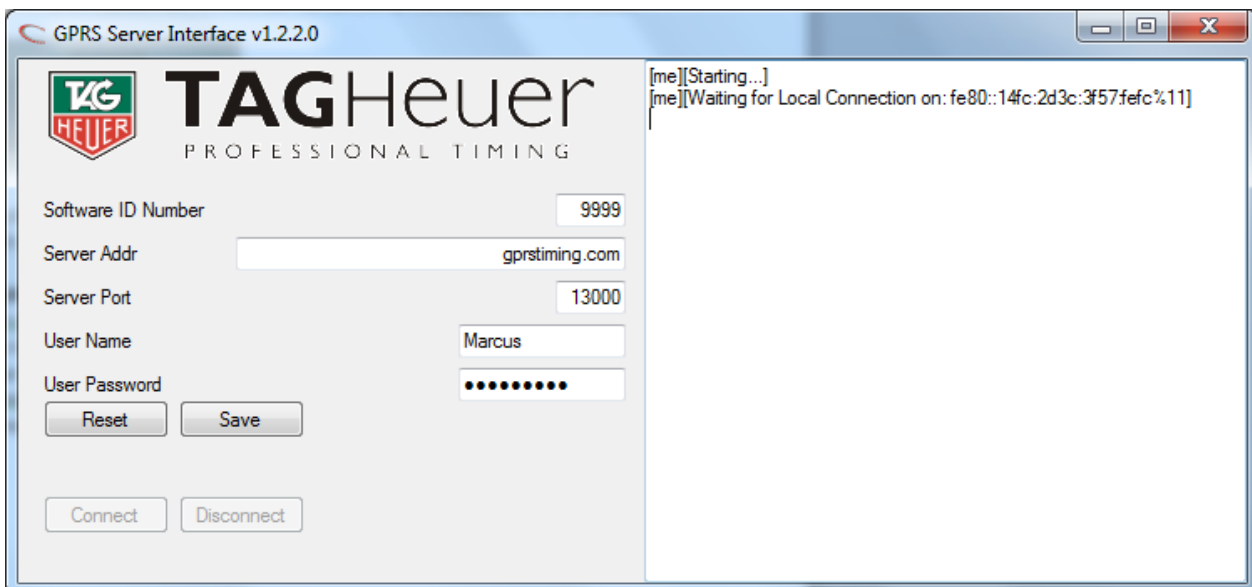
4. GPRS Interface

This software should run in the background of the computer running the Timing Software.

The interface collects all data (if pools are set) from the server and will deliver them on the local loopback address 127.0.0.1.

Identified as “PC” on the server. The interface (your computer) should be identified with a serial number of your choice.

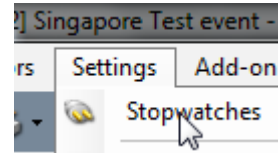
The connection is automatic until the Timing software opens the socket.



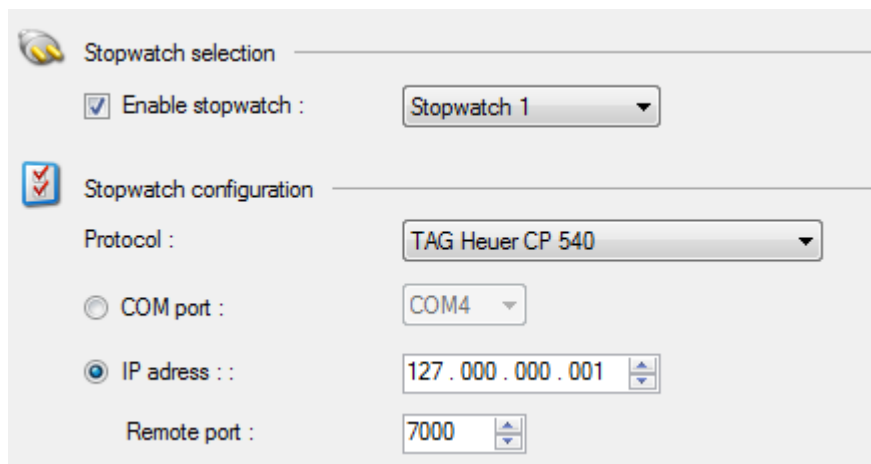


5. Timing Software settings

In our example we will use TAG Heuer by Chronolec "ELITE V3".
Go into the Setting Menu and set your Timer.



Enable a Stopwatch and select the Network connection.
IP address should be set on the loopback address 127.0.0.1



Remote connection will only be available when you open the Timing window.
The following message will appear in the GPRS Interface:

```
[me][Waiting for Local Connection on: fe80::3d5f:48de:f96:93e0%12]
[me][NEW Local Connection: 127.0.0.1:51575]
[me][Connecting to Server]
[me][Connected]
[Server][#GC 0]
```

You are now ready to collect data over the internet on to your computer.