

ATOM SYSTEM

HOW TO CONNECT AN ATOM DECODER TO A COMPUTER

NOTES

IMPORTANT

TO COMMUNICATE WITH AN ITS CHRONO TIMING DEVICE, THE CONNECTED PC MUST HAVE A FIXED IP ADDRESS

THE DEFAULT IP ADDRESS OF ALL ITS CHRONO TIMING DEVICES IS

192.168.000.101

AND THE DEFAULT LOCAL PORT AND REMOTE PORT

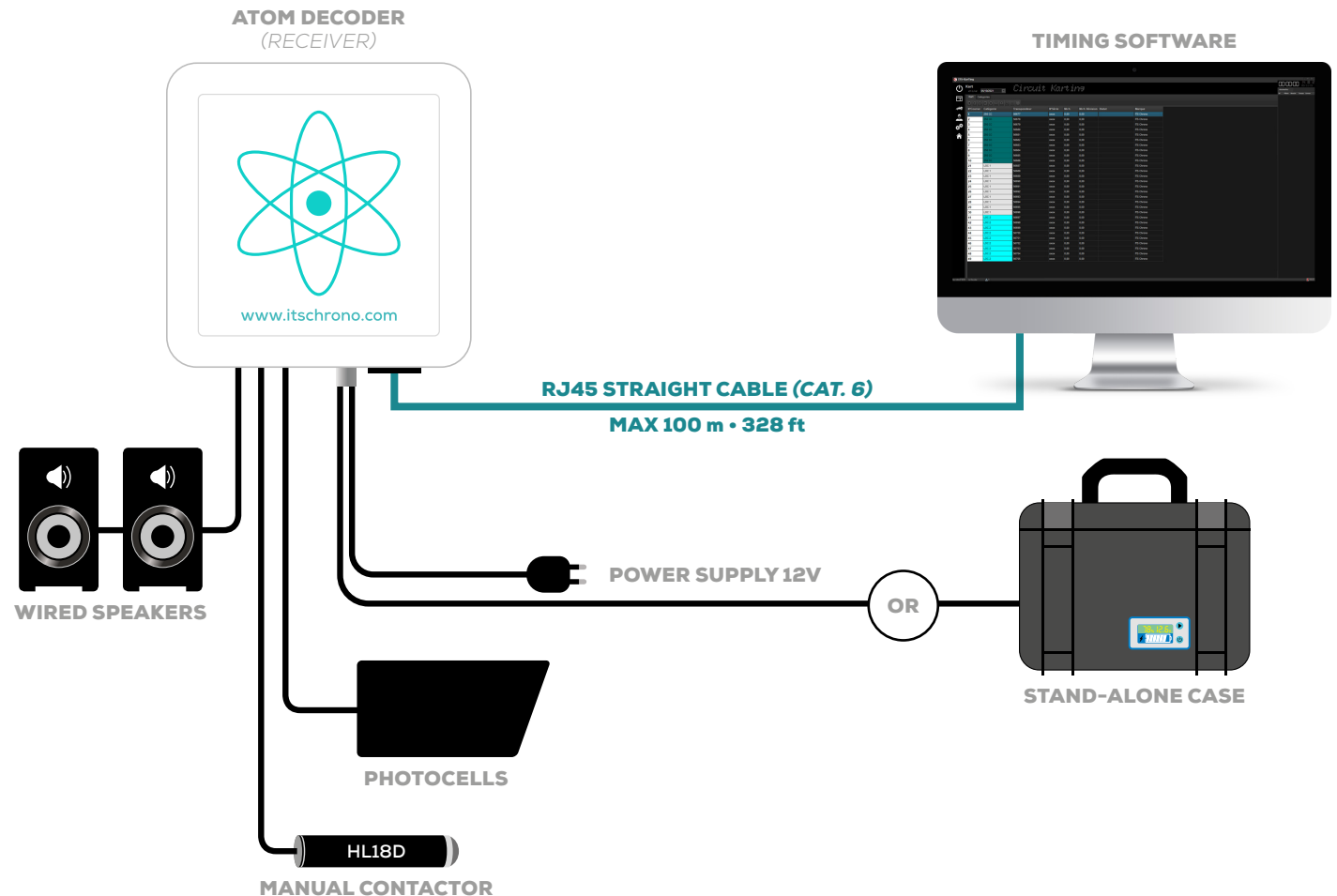
2101

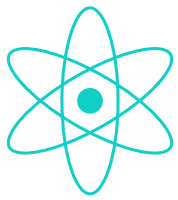
WARNING

THE WINDOWS SETTINGS BELOW ONLY WORK IF YOU ARE ON A SINGLE LOCAL NETWORK WITHOUT A ROUTER.

IF YOUR COMPUTER IS ON A LOCAL NETWORK WITH A ROUTER, YOU'LL NEED TO CHANGE YOUR DEVICE'S IP ADDRESS.

INSTALLATION





ATOM SYSTEM

HOW TO CONNECT AN ATOM DECODER TO A COMPUTER

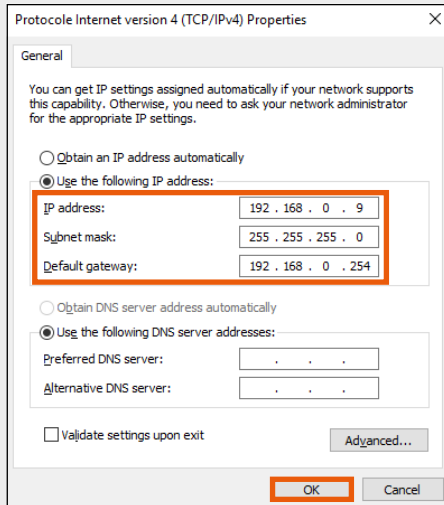
IMPORTANT

THE IP ADDRESS OF THE COMPUTER MUST BE IDENTICAL TO THAT OF THE DEVICE FOR THE FIRST 3 GROUPS OF NUMBERS : **192.168.000**

ONLY THE LAST GROUP OF NUMBERS MUST BE DIFFERENT (10 FOR THE DEVICE AND 9 FOR THE COMPUTER FOR EXAMPLE)

THE SUBNET MASK MUST BE **255.255.255.0**

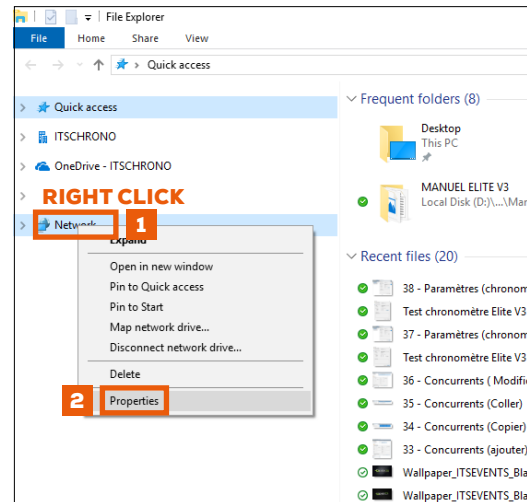
AND THE DEFAULT GATEWAY **IS NOT REQUIRED**



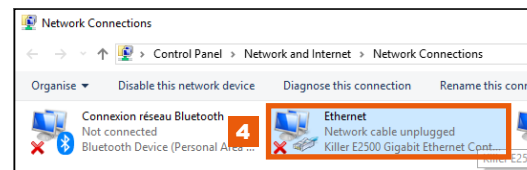
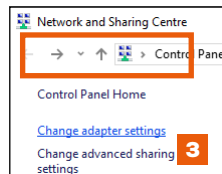
THE COMPUTER IS NOW READY TO COMMUNICATE WITH THE DEVICE

WINDOWS SETTINGS

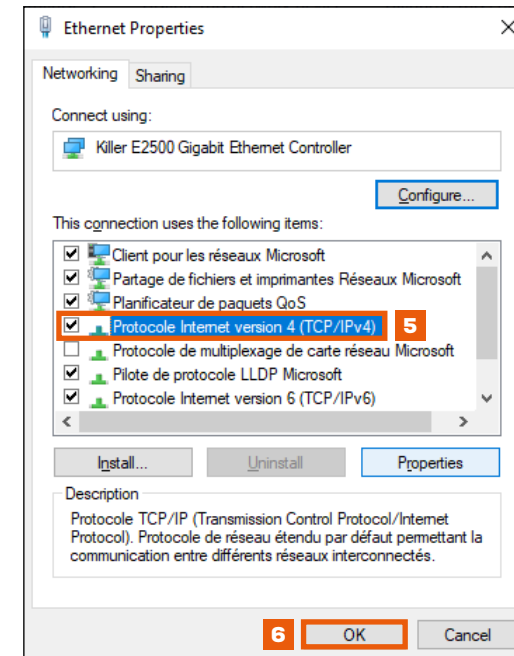
Go to the Windows Explorer of your computer, right-click on the **NETWORK** folder, then choose the **PROPERTIES** tab.



Select **CHANGE ADAPTER SETTINGS** then double-click on **ETHERNET**.



From the open tab Ethernet Properties : Select **PROTOCOLE INTERNET VERSION 4 (TCP/IPv4)** then **OK**.



IF THE CONNECTION DOESN'T WORK

CHECK YOUR WIRING. DISABLE WINDOWS FIREWALL AND ANTIVIRUS THROUGH THE WINDOWS DEFENDER SETTINGS.

