



ITS UPDATER • TM550

FIRMWARE UPDATE

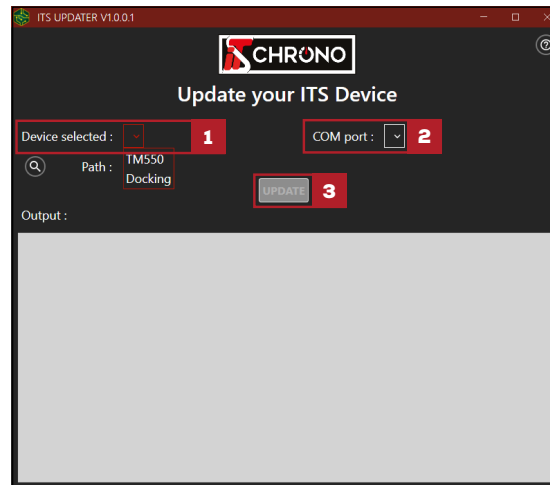
REF. ITSTM550



DOWNLOAD THE UPDATE
FROM OUR WEBSITE

TM550 UPDATE

PROCEDURE OF THE UPDATE



PREREQUISITES :

- The TM550 must be in update mode : **MENU UPDATE OF TM550 -> YES**
- The software must be under Windows 10 (Apple incompatible)

STEPS :

- 1** • Select the hardware to be updated
- 2** • Find the com port of the TM550 among the available com ports via the drop-down menu (all available com ports are displayed)
• Select the TM550 update «.BIN» file
- 3** • Press the **UPDATE** button to start the update

NOTE : if an error message is displayed, it means that either the com port was not the one the TM550, or the TM550 was not in update mode

PROCEDURE OF RECOVERY

- Hold **SHIFT + ON** for 4 seconds : the screen will turn white
- Check that a new com port is available in the device manager
- Repeat the update procedure

IMPORTANT

AFTER THE UPDATE DELETE THE HANDLES :
MENU HANDLE OF THE TM550 / DELETE HANDLES / YES

AFTER UPDATING, RESET TO FACTORY SETTINGS :
MENU OPTIONS OF THE TM550 / FACTORY SETTINGS / YES

DO NOT UNPLUG THE TM550 DURING THE UPDATE

IN CASE OF INTERRUPTION OF THE UPDATE (DISCONNECTION OF THE CABLE OR UNEXPECTED EXTINCTION OF THE PC), AND IF THE TM550 DOES NOT LIGHT ANY MORE (BLACK SCREEN), IT WILL BE NECESSARY TO FOLLOW THE STEPS OF THE PROCEDURE OF RECOVERY

ERROR MESSAGE : THE TM550 IS NOT IN UPDATE MODE

Error

An error has occurred, please check the TM550 update menu and accept for turn on the update mode.
If the error still occurs reboot the TM550 and repeat the update process.

OK

MESSAGE : THE UPDATE IS SUCCESSFUL

Success

Update done, please restart the TM550.

OK





ITS UPDATER • DOCKING

FIRMWARE UPDATE

REF. ITSDOCKING

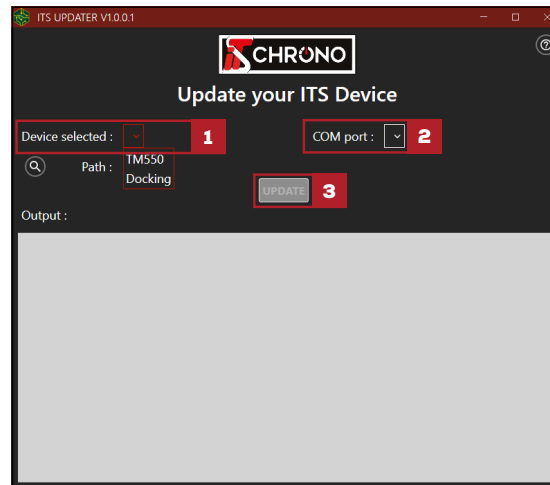


DOCKING

DOWNLOAD THE UPDATE
FROM OUR WEBSITE

DOCKING UPDATE

PROCEDURE OF THE UPDATE



PREREQUISITES :

- The Docking must be in update mode : **UPDATE BUTTON ON THE DOCKING** to be held when starting the Docking
- The software must be under Windows 10 (Apple incompatible)

STEPS :

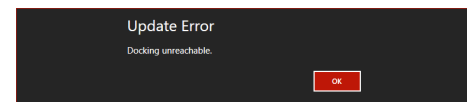
- 1** • Select the hardware to be updated
- 2** • Find the com port of the Docking among the available com ports via the drop-down menu (all available com ports are displayed)
 - Select the Docking update «.BIN» file
- 3** • Press the **UPDATE** button to start the update

NOTE : if an error message is displayed, it means that either the com port was not the one the Docking, or the Docking was not in update mode

IMPORTANT

DO NOT UNPLUG THE DOCKING DURING THE UPDATE

ERROR MESSAGE : THE DOCKING IS NOT IN UPDATE MODE



MESSAGE : THE UPDATE IS SUCCESSFUL

